

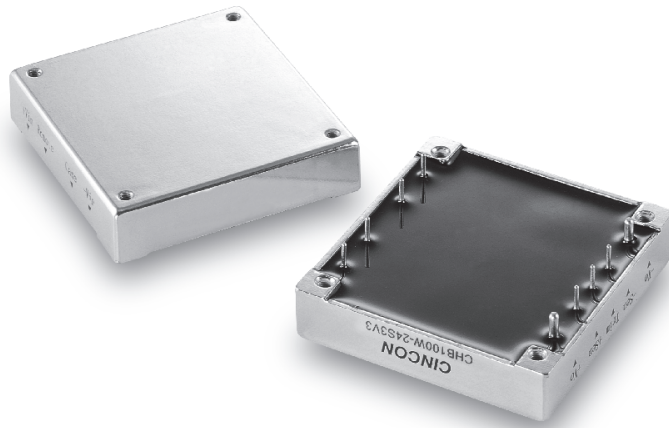
DC DC

Part Num

CHB100W SERIES**STONTRONICS**

THE POWER TO SUPPLY

part of Stadium Group Plc.

66 TO 100 WATT 4:1 INPUT RANGE DC-DC CONVERTERS**Features:**

- 66-100W Isolated Output
- 4 : 1 Wide Input Range
- Half-Brick Package
- Efficiency to 88%
- Regulated Outputs
- Five-Sided Shield Metal Case
- Continuous Short Circuit Protection

Safety Approvals**Electrical Characteristics:**

MODEL	INPUT VOLTAGE	OUTPUT VOLTAGE	OUTPUT CURRENT		INPUT CURRENT		%EFF	SIZE
			MIN	MAX	NO LOAD	FULL LOAD		
CHB100W-24S3V3	9-36 VDC	3.3VDC	0mA	20 A	35mA	3374mA	81.5	Half-Brick
CHB100W-24S05	9-36 VDC	5.0VDC	0mA	20 A	35mA	4990mA	83.5	Half-Brick
CHB100W-24S12	9-36 VDC	12 VDC	0mA	8.3 A	35mA	4902mA	85	Half-Brick
CHB100W-24S15	9-36 VDC	15 VDC	0mA	6.7 A	35mA	4817mA	86.5	Half-Brick
CHB100W-24S24	9-36 VDC	24 VDC	0mA	4.17 A	35mA	4849mA	86	Half-Brick
CHB100W-48S3V3	18-75VDC	3.3VDC	0mA	20 A	30mA	1708mA	80.5	Half-Brick
CHB100W-48S05	18-75VDC	5.0VDC	0mA	20 A	30mA	2422mA	86	Half-Brick
CHB100W-48S12	18-75VDC	12 VDC	0mA	8.3 A	30mA	2408mA	86.5	Half-Brick
CHB100W-48S15	18-75VDC	15 VDC	0mA	6.7 A	30mA	2381mA	87.5	Half-Brick
CHB100W-48S24	18-75VDC	24 VDC	0mA	4.17 A	30mA	2367mA	88	Half-Brick

NOTE: 1. Nominal Input Voltage 24 or 48 VDC

Stontronics Ltd

Chancerygate Business Centre, Cradock Road, Reading, Berkshire, RG2 0AH.

Tel: +44 (0) 118 931 1199 • Fax: +44 (0) 118 931 1145 • Email: info@stontronics.co.uk • Web: www.stontronics.com

Please Note: Image shown is representative of entire range. Individual PSU image &/or drawings or data sheets available on request.

Stontronics Ltd accepts no responsibility for typographical errors in the production of this leaflet. Product specifications are subject to change without notice.



